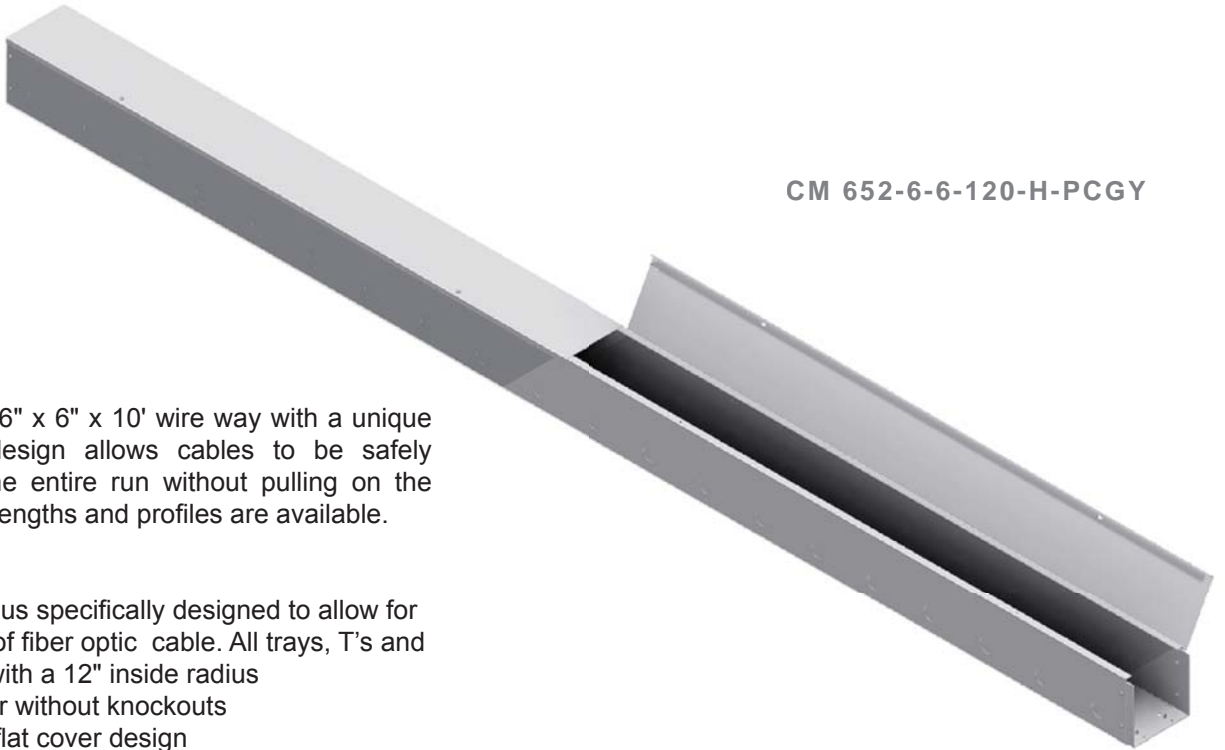


Snake Way Secured Pathway System

CM 652 Series (as shown)



CM 652-6-6-120-H-PCGY

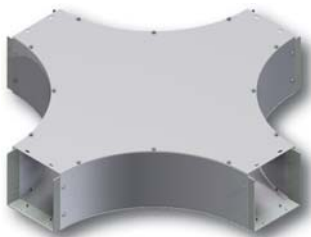
Applications:

Galvanized steel 6" x 6" x 10' wire way with a unique opening cover design allows cables to be safely installed along the entire run without pulling on the cable. Additional lengths and profiles are available.

Features:

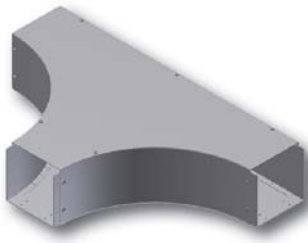
- ◆ Large bend radius specifically designed to allow for the installation of fiber optic cable. All trays, T's and crosses come with a 12" inside radius
- ◆ Available with or without knockouts
- ◆ Unique hinged flat cover design
- ◆ Secure bolt together construction
- ◆ Constructed from 16 GA or 14 GA galvanized steel with customer specified powder coat finish available

CM 652-6-6-CG-PCGY



6" x 6" x 6" x 6" X component

CM 652-6-6-T-PCGY



6" x 6" x 6" T component

CM 652-6-6-90-PCGY



6" x 6" 90° component

CM 652-6-6-45-PCGY



6" x 6" 45° component

Constructed from 16 GA galvanized steel, phosphate dipped and powder coated ANSI 61 grey inside and out. Custom colors are available upon request. The curved 12" radius maintains proper bend radius for all cables especially control and fiber optics. Screwed covers are completely removable and permit total access necessary to lay cables without pulling.



Snake Tray® products are covered by one or more of the following patents: #6637704, #6637165, #6463704, #6460812, #6449912, #6361000, #6347493, #6019323, #6347493, #6449912, #6460812, #5953870, #5839702, #6926236, #7168212, #7959019. Foreign Patents: Australia #737813, #748160, #749488, #776643, #776644. Canada #2251732, #2319624, #2303081, #2396792. Japan #3723224. Mexico #204995, #229386, #220889. Europe #1012938, 1012937. Other Patents Pending.

CABLE MANAGEMENT SOLUTIONS, INC.

CABLE MANAGEMENT AND POWER DISTRIBUTION

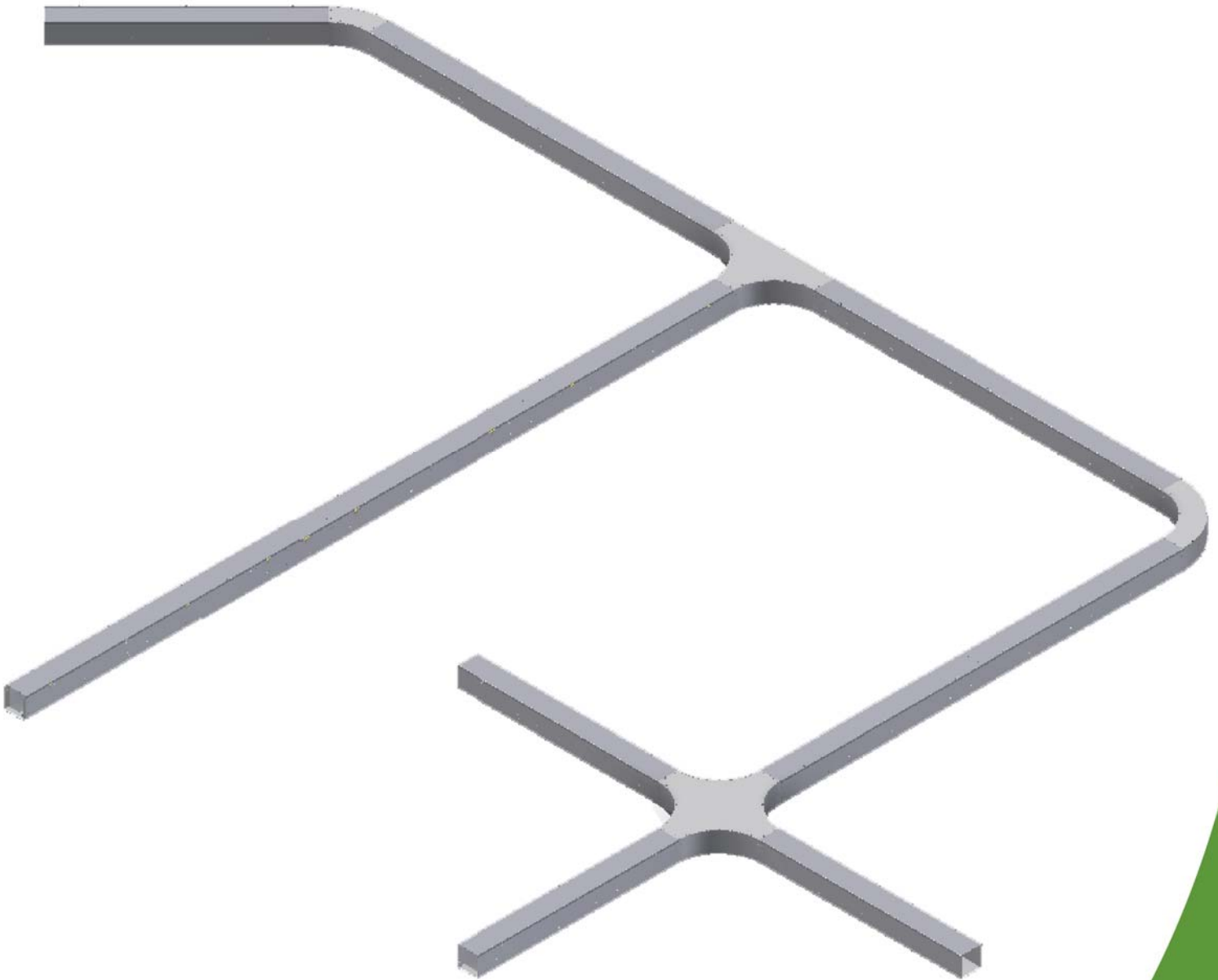
291 SKIP LANE ♦ BAY SHORE, NEW YORK 11706 USA ♦ TEL: (800)308-6788 (631)674-0004

Document No. MKTG-0049 ♦ Revised August 2012 ♦ © 2012 Snake Tray

Made in the USA

Snake Way Secured Pathway System

CM 652 Series (as shown)



Snake Tray® products are covered by one or more of the following patents: #6637704, #6637165, #6463704, #6460812, #6449912, #6361000, #6347493, #6019323, #6347493, #6449912, #6460812, #5953870, #5839702, #6926236, #7168212, #7959019. Foreign Patents: Australia #737813, #748160, #749488, #776643, #776644. Canada #2251732, #2319624, #2303081, #2396792. Japan #3723224. Mexico #204995, #229386, #220889. Europe #1012938, 1012937. Other Patents Pending.

CABLE MANAGEMENT SOLUTIONS, INC.

CABLE MANAGEMENT AND POWER DISTRIBUTION

291 SKIP LANE ♦ BAY SHORE, NEW YORK 11706 USA ♦ TEL: (800)308-6788 (631)674-0004

Document No. MKTG-0049 ♦ Revised August 2012 ♦ © 2012 Snake Tray

Made in the USA